



Senior Leadership Team  
'Meet & Greet'  
Monday 11th September 2023





Asalaamalaykum, peace  
be upon you!



The Olive Tree  
Primary School





# Aim:

- Introductions from the Senior Leadership Team
- Vision and Values
- Key successes in pupil outcomes
- Plans for the Academic Year 2023-2024
- Mental Health Support Reminder
- Term Dates 2023/24
- School Website and Social media

Trust

Peace

Fairness

Respect

Equality

Compassion

# Believe You Can



“The vision for the school is one where a respect for excellence in learning pervades all aspects of school life.”

Trust

Peace

Fairness

Respect

Equality

Compassion

# Key successes in pupil outcomes: 2022-23

In the last academic year we achieved great successes across the school in pupil learning outcomes and this was despite the effects of Covid-19.

Towards the end of year 6, pupils sat the Statutory Assessment Tests (SATs) - the school achieved above or in line with national averages in all areas (Reading, Writing and Maths).

This data will be published on the school website.

Trust

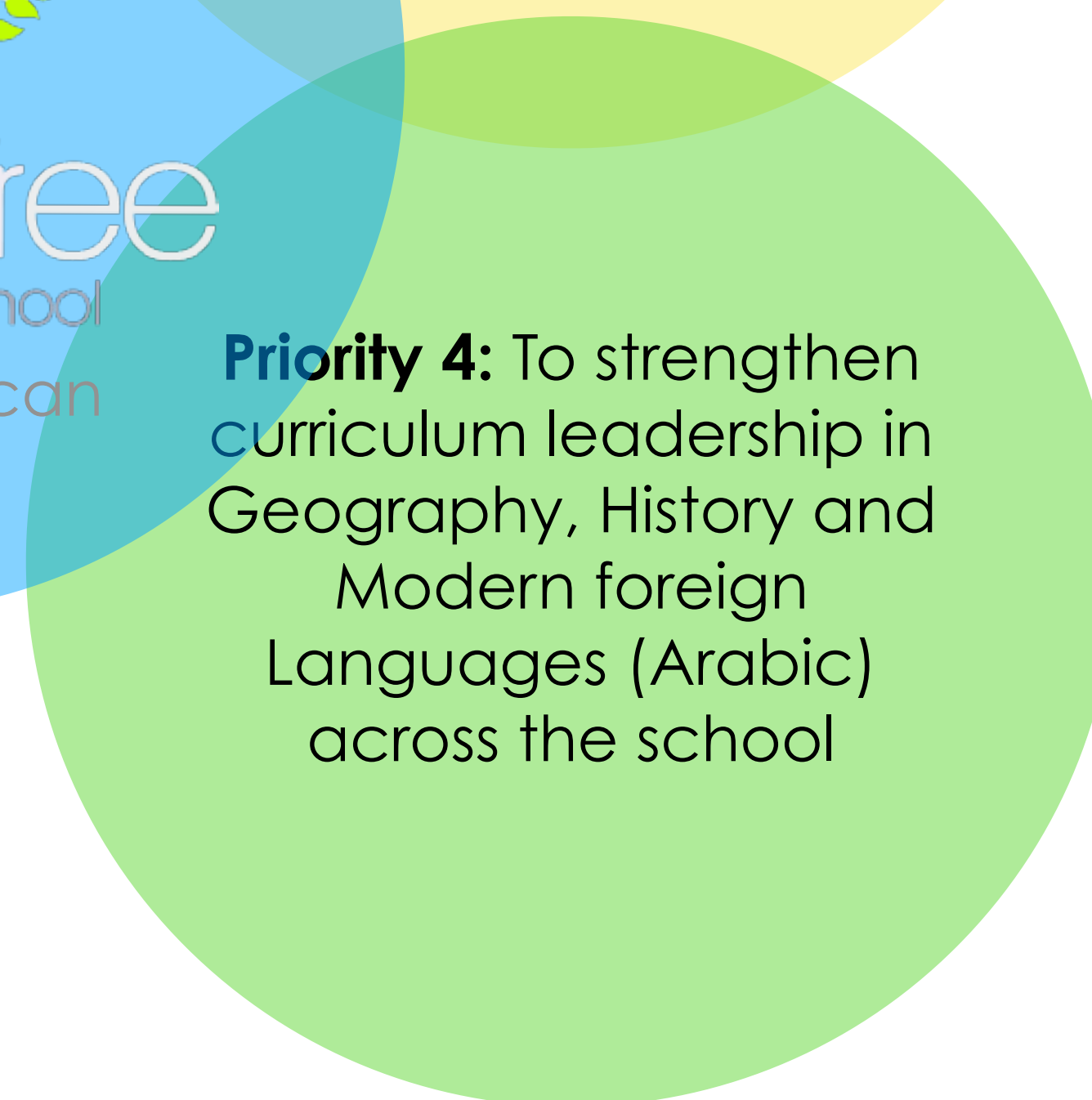
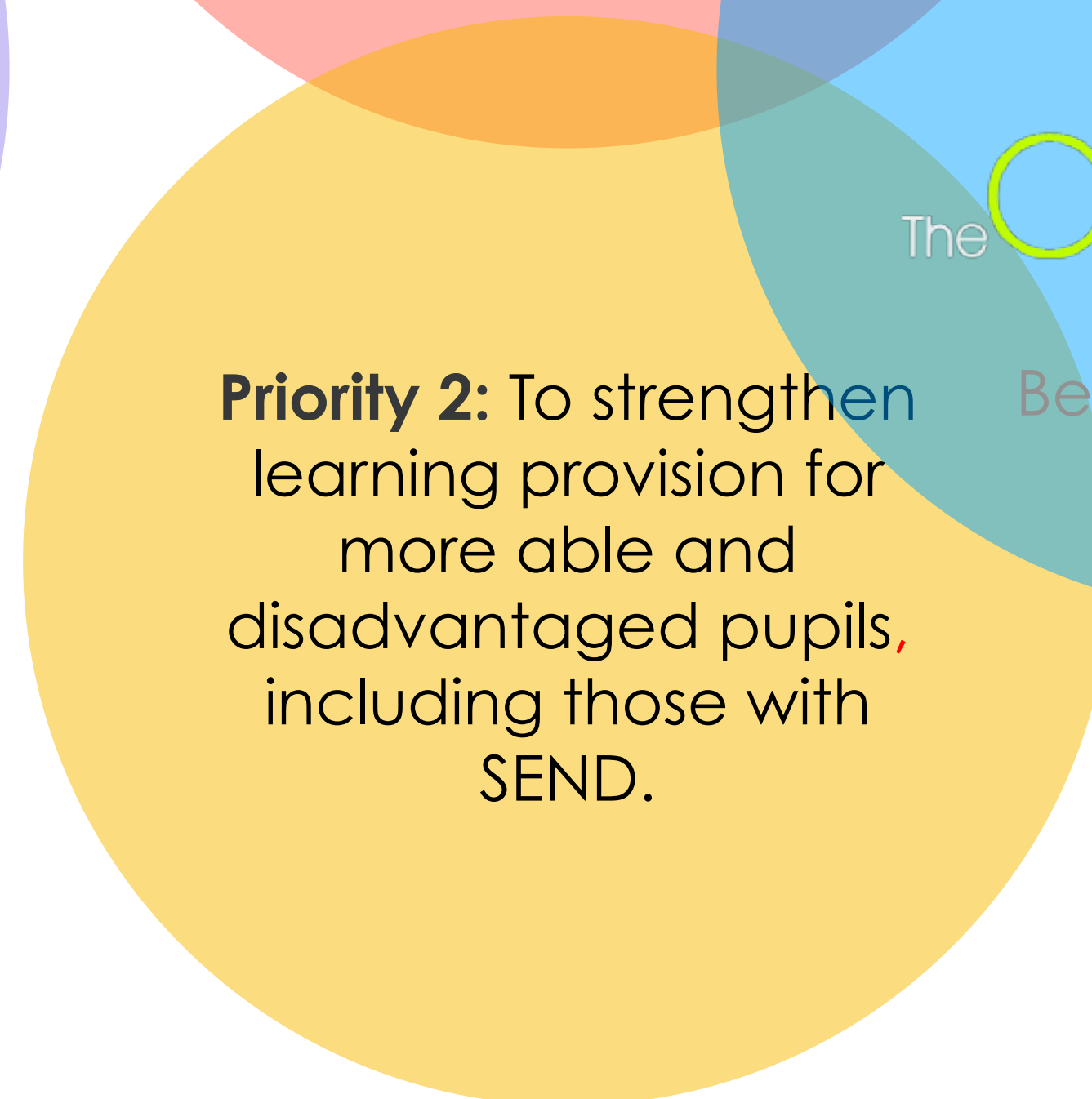
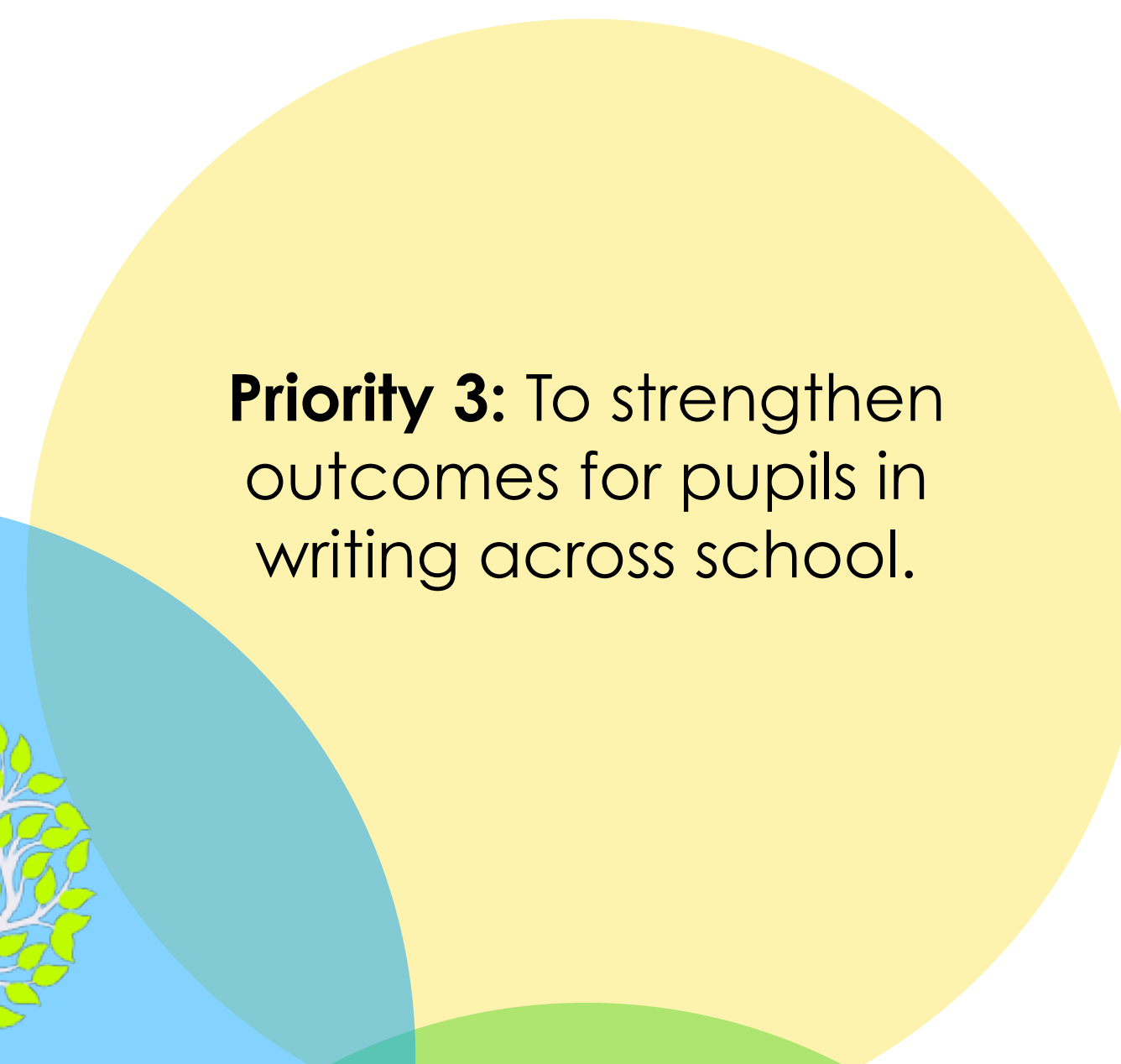
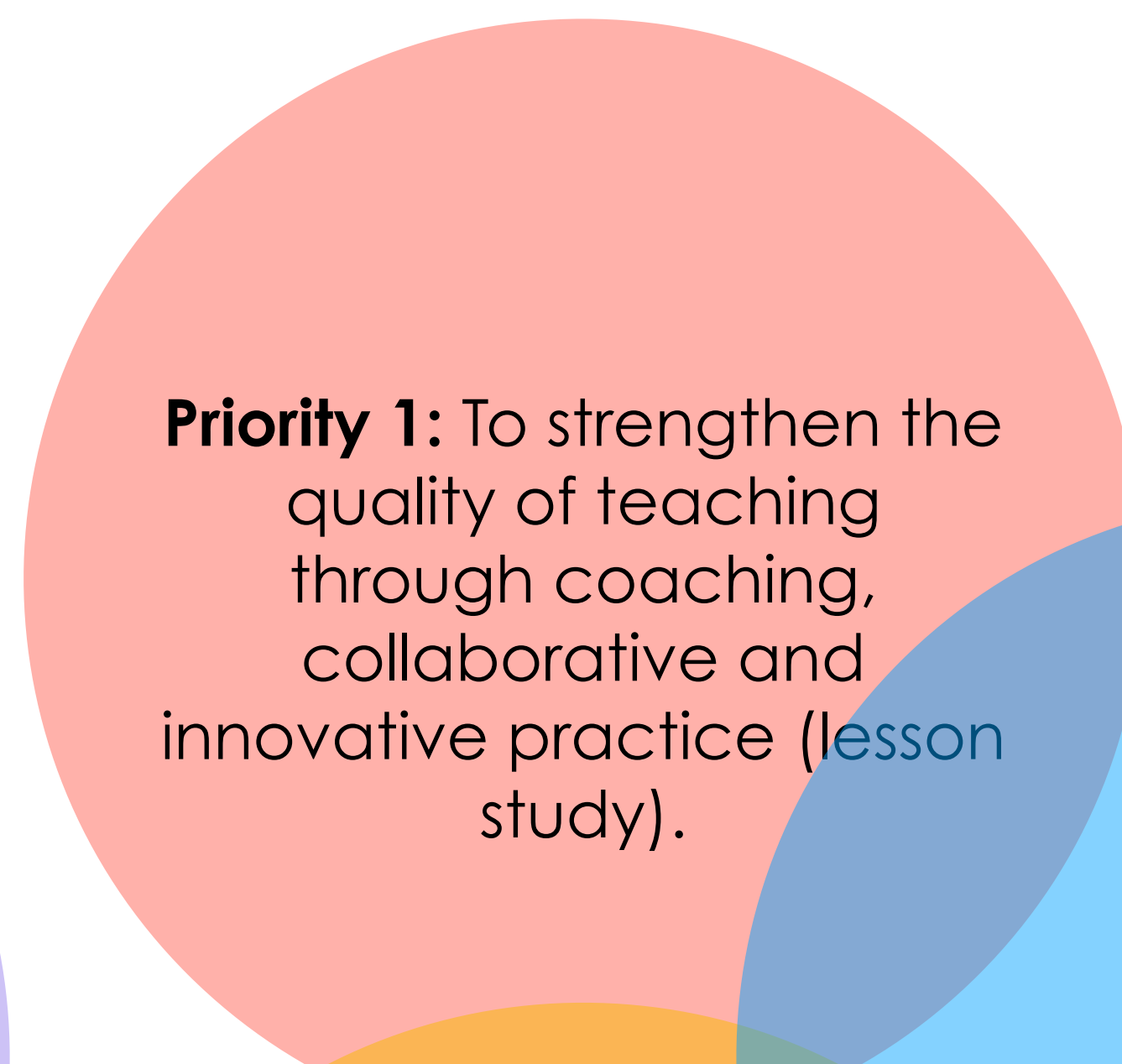
Peace

Fairness

Respect

Equality

Compassion



Trust

Peace

Fairness

Respect

Equality

Compassion



# Support for mental health



## Seeking help for domestic violence and mental health:

**Domestic violence:** Sadly, the holiday periods some times bring with them added pressures on families which result in them facing challenges. In order to support victims of domestic abuse, we are involved in 'Operation Encompass' - the purpose of which is to safeguard and support children and young people who have been affected by domestic abuse incident. This involves working in partnership with the police and social services. Should you experience issues related to domestic violence, these can be reported as follows:

- If you are in immediate danger phone 999 or get someone else to phone on your behalf.
- Move to a safe place, avoiding kitchens or stairs, and stay near a door for a quick escape. If in doubt, get out.
- If the situation is not an emergency, but you still need the police, call 101.

Further non-urgent advice and support about domestic violence is available from:

- [www.boltonathome.org.uk](http://www.boltonathome.org.uk) or by calling 01204 329636, 01204 327997, 01204 328008 during office hours;
- <https://fortalice.org.uk> or by calling their 24 hour helpline on 01204 365677

## Support with mental health for adults and children:

Kooth & Qwell are online mental health services, providing free, safe and anonymous mental health and wellbeing support in Bolton. Kooth.com is available for ages 11-25, while Qwell.io is available for those aged 26+. There are no costs, no waiting lists, no referrals and no criteria required to access the service, which is accredited by the British Association for Counselling and Psychotherapy (BACP) and delivered by Kooth plc, the UK's largest digital mental health provider. Users can access peer to peer support through moderated discussion boards, and self help resources including magazine articles and activities. They also offer online text-based counselling and support from qualified counsellors and emotional wellbeing practitioners, who are available from 12 noon - 10pm on weekdays and from 6pm - 10pm on weekends. You can access this support today: [www.Kooth.com](http://www.Kooth.com) or [www.Qwell.io](http://www.Qwell.io).

Trust

Peace

Fairness

Respect

Equality

Compassion

## Term dates for 2023/24 (holiday pattern)

**INSET:** Friday 1st September & Monday 4th September 2023



### Autumn Term

#### Total **74** days in term

Term begins:

Tuesday 5<sup>th</sup> September 2023

Half Term:

Monday 30<sup>th</sup> October – Friday 3<sup>rd</sup> November 2023

Term ends:

Friday 22<sup>nd</sup> December 2023

### Spring Term

#### Total **54** days in term

Term begins:

Monday 8<sup>th</sup> January 2024

Half Term:

Monday 19<sup>th</sup> February – Friday 23<sup>rd</sup> February 2024

Term ends:

Thursday 28<sup>th</sup> March 2024

**Eid ul Fitr 1445\***

**Wednesday 10th April 2024**

### Summer Term

#### Total **62** days in term

Term begins: Monday 15<sup>th</sup> April 2024

Bank Holiday:

Monday 6<sup>th</sup> May 2024

Half Term:

Monday 27<sup>th</sup> May (Bank holiday) – Friday 31<sup>st</sup> May 2024

**Eid ul Adha 1445\***

**Monday 17th and Tuesday 18th June 2024 (school closed)**

Term ends:

Friday 19<sup>th</sup> July 2024

### Additional Information:

- Children will be in school for 190 days.
- Staff will be in school for 192 days.
- Staff INSETs : two full days on 1/9/23 and 4/9/23
- The start of next academic year for pupils is Monday 2<sup>nd</sup> September 2024

Trust

Peace

Fairness

Respect

Equality

Compassion





About ▾

Home Learning

Key Info ▾

Parents ▾

Classes ▾

CP



**Our vision ‘Believe you  
can’ summarises our  
commitment to bringing  
out the best in the entire  
school community**



@OliveTreeBolton

<https://www.theolivetreeprimary.com/#>

Trust

Peace

Fairness

Respect

Equality

Compassion